



Library CADSTAR Library Editor

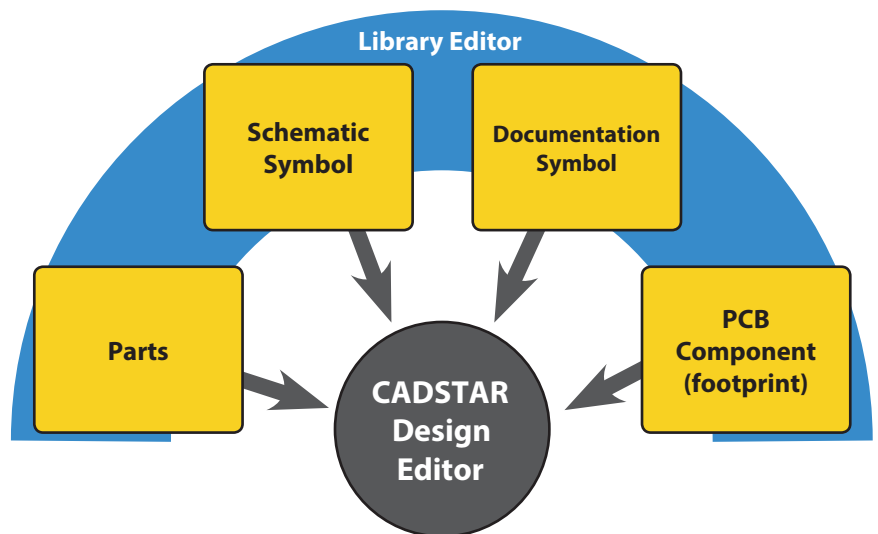
TOP FEATURES AND BENEFITS

- Rapid part creation through embedded logical and physical library wizards
- Automatic version control for symbols, components and parts
- Automatic symbol and gate partitioning with import FPGA packaging
- Flexible architecture allowing tight integration with existing PLM, PDM, MRP or other IT infrastructure
- Manage part obsolescence with embedded part acceptance system
- Meet vendor-specific requirements by defining unlimited alternate footprints for each part number
- Include document and URL paths for easy access to documentation and datasheets
- Improve downstream searches and generate reports through support for user-defined attributes
- Access online library of 250,000 parts to reduce time in library development.

Introduction

The CADSTAR Library Editor provides a complete solution for creating and editing symbol, footprints and part information for PCB design. Integrated into the CADSTAR framework, Library Editor shares the same set of user interface and configuration settings with the other applications in the CADSTAR family – making it easy to learn and maximizing productivity during product development.

Central to the CADSTAR design flow is the parts library, which supports a constraints-driven design flow through logic circuit design, all the way to preparing manufacturing outputs for the PCB. The CADSTAR Library editor supplies the critical parts information and attributes that are required at each step of the design process. Parts library data can be stored in either a local library or incorporated into an ODBC-compliant database, supporting integration with a workgroup engineering database, enterprise-level MRP, or PDM system.



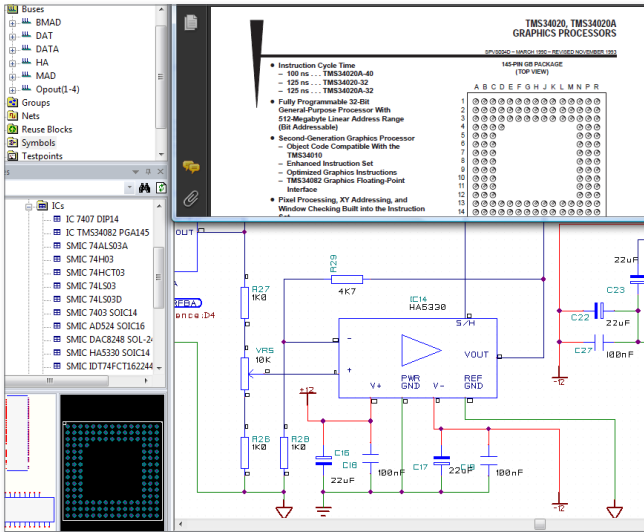
CADSTAR Library Editor - a fully integrated library development environment

Symbols and Parts Creation

Create multiple styles of symbols to denote alternate representations, then choose which to display in CADSTAR. Alternate footprints can be swapped between prototype and production standards to meet different manufacturing requirements, without changing the Bill of Materials.

For PCB components, the Layer Stack and Assignment editors let you configure the PCB design to meet your electrical and manufacturing requirements. Combined with user-configurable template files, libraries form the foundation of the CADSTAR design suite and are the repository of design assignments and rules.

Part attributes can be assigned a scope that links them either to an individual application, to all applications, to the library, or to other levels of availability; ensuring that only relevant data is displayed in the design or exported from the project.

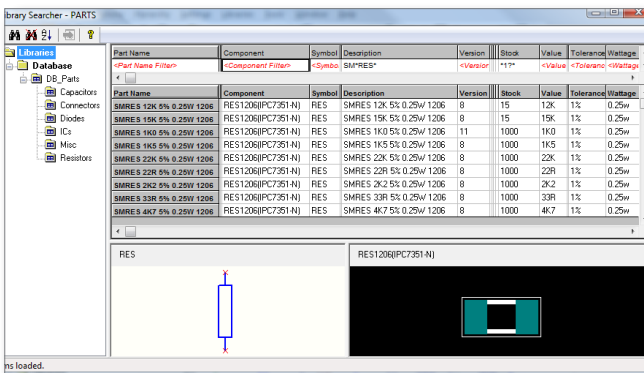


Direct access to local or web-based datasheets

Embedded links to local or internet-based resource files, such as a datasheet or device application notes, put more information at the fingertips of your design team.

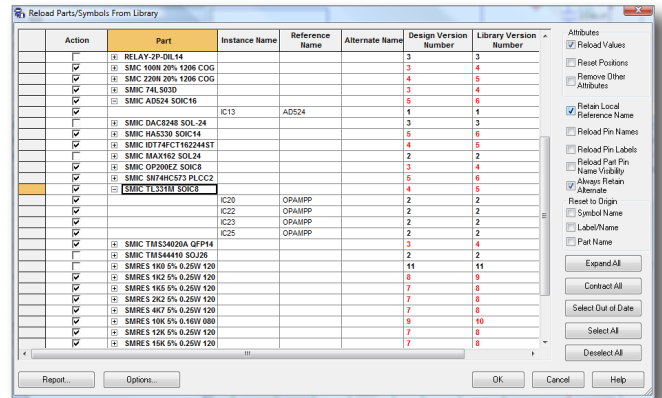
Database-Driven Design

Linking the CADSTAR part library to your MRP system enhances part selection by enabling parametric search via any set of attributes in the library, allowing the design engineer to make informed choices when there are multiple parts that match the search criteria.



Part selection by specifying any number of criteria

The active link between logical and physical circuit design and the CADSTAR library allows you to verify and update the component information at any time, ensuring key attributes such as stock quantity, lead-time and availability are kept up-to-date, and accurate reports and statistics are exported from the design.

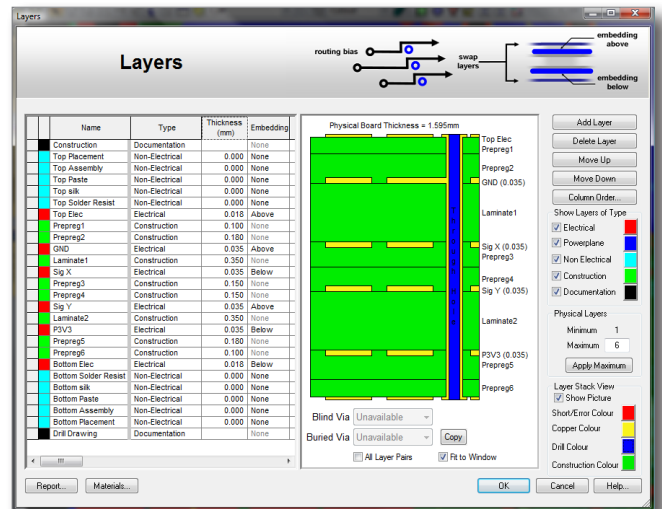


Part selection by specifying any number of criteria

Library Management

The CADSTAR Library Editor enables centralized library management while your design team focuses on higher priority tasks.

Design rule templates can be defined and reused for a wide range of layer stack-ups and design rule configurations that meet your manufacturing objectives, ensuring projects are implemented within physical and budgetary constraints.



Part selection by specifying any number of criteria

On-Line Libraries

With more than 250,000 parts in the online library, CADSTAR has an extensive range of parts from which to build your design. Creating your own footprints and parts is made easy with the Graphical Library Editor, which includes design wizards for building large or complex footprints.