



Windows Installer Service

Guide for installing eCADSTAR software

@CADSTAR™
BEYOND ENGINEERING

Copyright Notice

Copyright © Zuken, all rights reserved. This material is supplied in confidence by Zuken. Disclosure beyond the original recipients is prohibited.

The eCADSTAR Logo, CADSTAR and eCADSTAR name are trademarks or registered trademarks of ZUKEN Inc.

All other company or product names are trademarks or registered trademarks of their respective holders.

- Do not reproduce or republish the whole or any part of this document without permission.
- The document contains certain information that is of confidential and proprietary nature and shall not be disclosed, released or made available to any other person.
- The contents of this document are subject to change without notice for reasons of amendment or improvement.
- While the greatest care has been taken in the preparation of this document, we accept no responsibility whatsoever for any loss or damage, direct or indirect, of whatever nature and however caused, which may result from your use of this document in the operation of any system.

DISCLAIMER

- In no event shall ZUKEN be liable to any party for direct, indirect, special, incidental, or consequential damages, including lost profits, arising out of the use of this software or its documentation, even if ZUKEN or an affiliate or representative of ZUKEN has been advised of the possibility of such damages.
- ZUKEN specifically disclaims any warranties, including, but not limited to, the implied warranties of merchantability and fitness for a particular purpose.
eCADSTAR Network Licensing software and accompanying documentation are provided "as is".

Table of Contents

Copyright Notice	i
DISCLAIMER	i
Introduction	3
eCADSTAR Command Line Setup	3
The Setup Executable Options	4
The msiexec Options	5
The Properties of the msiexec Options	7
Performing a Silent Setup of eCADSTAR	11
Command Line Options to Silently Install eCADSTAR	12
Command Line Options to Silently Uninstall eCADSTAR	12
Command Line Options to set eCADSTAR Network License Server	13
Command Line Options when Using the CADSTAR Viewer Installer	13
Command Line Options when Using the CADSTAR Network License Server Installer	14
Performing an Administrative Installation	14
eCADSTAR Setup from the Administrative Installation Files	15

Introduction

The **Windows Installer Service** is an operating system service developed by Microsoft. The service improves the installation and uninstallation of programs, makes software deployment in corporate networks easier, helps to solve common problems, such as shared DLL conflicts, and reduces the total cost of ownership to the final user.

The **eCADSTAR** product installers use the **Windows Installer Service**.

This guide provides only a summary of the options that the user may typically call upon when using the **Windows Installer Service** to setup the **eCADSTAR** products. For full documentation for the **Windows Installer Service**, please click [here](#) to browse to the Microsoft website.

NOTE: For simple straight forward installation, you can run the eCADSTAR setup executables within the Windows interface using the Installation Wizards.

eCADSTAR Command Line Setup

The following command line options can be used with the **eCADSTAR** setup executables. The command line format should be entered as follows:

<eCADSTAR setup exe> <setup exe options> /v"<msiexec options>"

where:

<eCADSTAR setup exe>	Is the eCADSTAR setup executable for the eCADSTAR product. This file will typically be downloaded from the Zuken Global Support website. Example: eCADSTAR_2021.1.0.118_setup.exe
<setup exe options>	These are the options to control how the eCADSTAR setup executables behave and how it calls the Windows Installer Service . Example: /i
<msiexec options>	These are the options to be passed to the Windows Installer Service to control the operation of the msiexec command and configure properties for the software when performing the eCADSTAR setup operations. Example: /v"/qn" NOTE: Parameters to be passed to the Windows Installer Service must be enclosed within double quotation marks " <param> " and be prefixed with the /v option. No spaces should exist between the /v and " <param> " items.

The Setup Executable Options

The following options can be defined for the <setup exe options> when performing a command line setup of **eCADSTAR**.

Option	/i
Command Operation	Install Software
Description	<p>Launches the eCADSTAR setup to perform an install of the eCADSTAR software.</p> <p>NOTE: This is the default setting for the eCADSTAR setup executable so can be excluded from the command line format to install eCADSTAR.</p>
Example	eCADSTAR_2021.1.0.118_setup.exe /i

Option	/x
Command Operation	Uninstall Software
Description	<p>Launches the eCADSTAR setup to perform an uninstall of the eCADSTAR software.</p>
Example	eCADSTAR_2021.1.0.118_setup.exe /x

Option	/f
Command Operation	Repair Software
Description	<p>Launches the eCADSTAR setup to perform a repair of the eCADSTAR software.</p>
Example	eCADSTAR_2021.1.0.118_setup.exe /f

Option	/a
Command Operation	Administrative Installation
Description	<p>Launches the eCADSTAR setup to allow the extraction of the application files to a defined location on a network or local drive.</p> <p>NOTE: Please see section titled Administrative Installation for further details on using this option.</p>
Example	eCADSTAR_2021.1.0.118_setup.exe /a

Option	/s
Command Operation	Run eCADSTAR setup silently
Description	<p>Launches the eCADSTAR setup in silent mode when performing an install, uninstall, or repair of the eCADSTAR software.</p> <p>NOTE: The /s option can be used in combination with any of the options described above.</p>
Example	eCADSTAR_2021.1.0.118_setup.exe /s

The msiexec Options

The following options can be defined for the `/v"<msiexec options>"` when performing a command line setup of **eCADSTAR**.

Further details on the msiexec command line options can be found [here](#) on the Microsoft website.

If the setup process requires a reboot, some of the silent setup options will do so without warning. Please see the Microsoft documentation for further details.

Option	<code>/qn</code>
Command Operation	No User Interface
Description	Runs the Windows Installer Service with no user interface displayed to the user during the installation process. There is no confirmation message given when the setup process has completed. NOTE: The Windows Installer Service will fail if the user does not have Administrator privileges to install, uninstall or repair the software. This will typically occur as the user cannot confirm the User Account Control question.
Example	<code>eCADSTAR_2021.1.0.118_setup.exe /i /v"/qn"</code>

Option	<code>/qn+</code>
Command Operation	No User Interface with completion message
Description	Runs the Windows Installer Service with no user interface displayed to the user during the installation process. There is a confirmation message given when the setup process has completed. NOTE: The Windows Installer Service will fail if the user does not have Administrator privileges to install, uninstall or repair the software. This will typically occur as the user cannot confirm the User Account Control question.
Example	<code>eCADSTAR_2021.1.0.118_setup.exe /i /v"/qn+"</code>

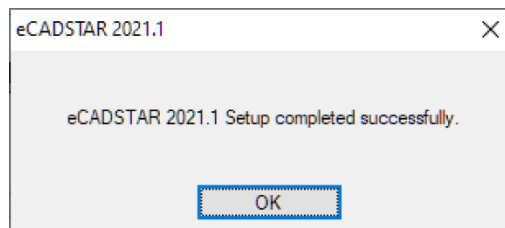


Figure 1: Confirmation Message at setup completion

Option	/qb
Command Operation	Basic User Interface
Description	Runs the Windows Installer Service with a basic user interface showing the progress of the setup process. The user interface includes a Cancel button. There is no confirmation message given when the setup process has completed. NOTE: If the user does not have Administrator privileges to install, uninstall or repair the software, they will be presented with the User Account Control question to continue to proceed.
Example	eCADSTAR_2021.1.0.118_setup.exe /i /v"/qb"

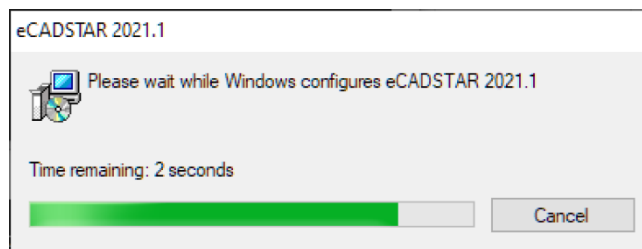


Figure 2: Basic User Interface

Option	/qb+
Command Operation	Basic User Interface with completion message
Description	Runs the Windows Installer Service with a basic user interface showing the progress of the setup process. The user interface includes a Cancel button. There is a confirmation message given when the setup process has completed. NOTE: If the user does not have Administrator privileges to install, uninstall or repair the software, they will be presented with the User Account Control question to continue to proceed.
Example	eCADSTAR_2021.1.0.118_setup.exe /i /v"/qb+"

Option	/qb!
Command Operation	Basic User Interface, no Cancel button
Description	Runs the Windows Installer Service with a basic user interface showing the progress of the setup process. The user interface does not include a Cancel button. There is no confirmation message given when the setup process has completed. NOTE: If the user does not have Administrator privileges to install, uninstall or repair the software, they will be presented with the User Account Control question to continue to proceed.
Example	eCADSTAR_2021.1.0.118_setup.exe /i /v"/qb!"

Option	/qr
Command Operation	Reduced User Interface
Description	<p>Runs the Windows Installer Service with a reduced user interface showing the progress of the setup process, the user cannot control the setup of the interface. The user interface includes a Cancel button. There is no confirmation message given when the setup process has completed.</p> <p>NOTE: If the user does not have Administrator privileges to install, uninstall or repair the software, they will be presented with the User Account Control question to continue to proceed.</p>
Example	eCADSTAR_2021.1.0.118_setup.exe /i /v"/qr"

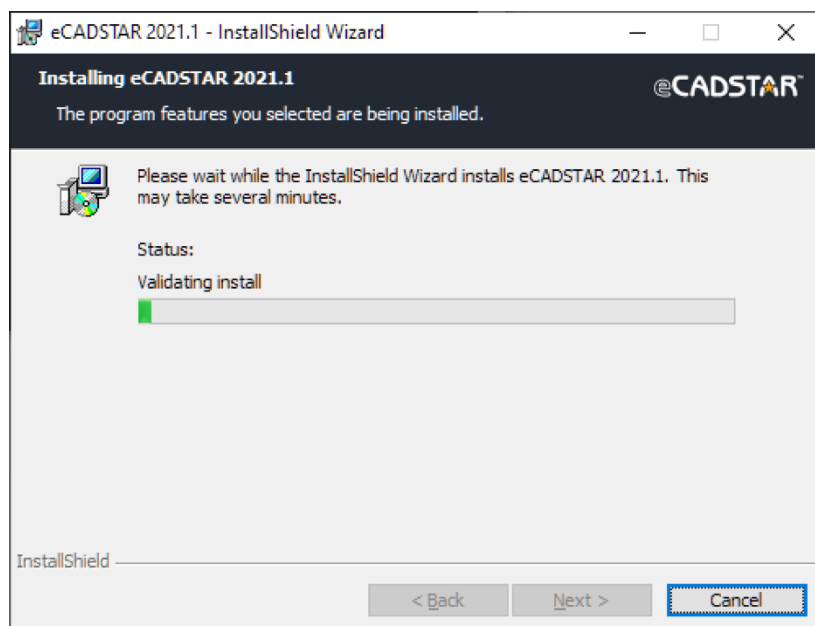


Figure 3: Reduced User Interface

The Properties of the msixec Options

The following properties are supported for **eCADSTAR** when using the Windows Installer Service to setup **eCADSTAR** from the command line.

- The **Property names** are case sensitive, so cannot be replaced with lower case characters.
 - Example: **INSTALLEDIR** not **InstallDir**
- Where the **Property values** contain space characters these values must be enclosed by double quotation " characters.
 - Double quotation " characters required within the /v" parameter to be passed to the msixec must be preceded with the escape sequence backslash \ character.
 - Example: /v"INSTALLDIR=\C:\eCADSTAR 2021\"

Property	INSTALLDIR
Description	Defines the installation directory for the eCADSTAR application files to be located.
Default	C:\Program Files\eCADSTAR\eCADSTAR 2021.1\
Example	eCADSTAR_2021.1.0.118_setup.exe /i /v"INSTALLDIR=D:\eCS2021"

Property	USERDIR
Description	Defines the installation directory for the eCADSTAR user files to be located.
Default	C:\Users\Public\eCADSTAR\eCADSTAR 2021.1\
Example	eCADSTAR_2021.1.0.118_setup.exe /i /v"USERDIR=D:\eCS2021_userfiles"

Property	LICENSETYPE
Description	<p>Defines the license type that will be used for the eCADSTAR applications. The possible license types are:</p> <p>If using a software key only: LICENSE_TYPE_NODELOCKED</p> <p>If using a network license server only or network license server combined with a software key: LICENSE_TYPE_NETANDNODE</p> <p>It is typical to also define the properties HOSTNAME and HOSTPORT when this property is defined with the value LICENSE_TYPE_NETANDNODE.</p>
Default	LICENSE_TYPE_NODELOCKED
Example	eCADSTAR_2021.1.0.118_setup.exe /i /v"LICENSETYPE=LICENSE_TYPE_NETANDNODE"

Property	HOSTNAME
Description	<p>Defines the host name of the network license server machine that will be used for the eCADSTAR applications.</p> <p>This property is only valid if the property LICENSETYPE=LICENSE_TYPE_NETANDNODE has been defined.</p> <p>It is typical to also define the property HOSTPORT when defining this property.</p>
Default	<BLANK>
Example	eCADSTAR_2021.1.0.118_setup.exe /i /v"LICENSETYPE=LICENSE_TYPE_NETANDNODE HOSTNAME=eCSlicserver"

Property	HOSTPORT
Description	<p>Defines the host port number of the network license server machine that will be used for the eCADSTAR applications.</p> <p>This property is only valid if the property LICENSETYPE=LICENSE_TYPE_NETANDNODE has been defined.</p> <p>It is typical to also define the property HOSTNAME when defining this property.</p>
Default	1700
Example	eCADSTAR_2021.1.0.118_setup.exe /i /v"LICENSETYPE=LICENSE_TYPE_NETANDNODE HOSTPORT=12380"

Property	ALLUSERS
Description	<p>Defines which users when logged onto the machine can access the installed eCADSTAR applications.</p> <p>To control the process to only install for the current user then the property should be defined as ALLUSERS=""</p>
Default	All Users
Example	eCADSTAR_2021.1.0.118_setup.exe /i /v"ALLUSERS="" /qn"

Property	ASSOCIATEFILETYPES
Description	<p>Defines if the sdes and pdes file types are to be associated with the eCADSTAR applications.</p> <p>To control if the sdes and pdes file types are not to be associated with the eCADSTAR then the property should be defined as ASSOCIATEFILETYPES=""</p>
Default	ON
Example	eCADSTAR_2021.1.0.118_setup.exe /i /v"ASSOCIATEFILETYPES=""

Property	ASSOCIATEFILETYPES_SCHEMATIC
Description	<p>Defines if the sdes file type is to be associated with the eCADSTAR Schematic Viewer application.</p> <p>To control if the sdes file type is to be associated with the eCADSTAR Schematic Viewer then the property should be defined as ASSOCIATEFILETYPES_SCHEMATIC=-viewerMode</p> <p>This property is not valid if the property ASSOCIATEFILETYPES="" has been defined in the command line string.</p>
Default	eCADSTAR Schematic Editor
Example	eCADSTAR_2021.1.0.118_setup.exe /i /v"ASSOCIATEFILETYPES_SCHEMATIC=-viewerMode"

Property	ASSOCIATEFILETYPES_PCB
Description	<p>Defines if the pdes file type is to be associated with or the eCADSTAR PCB Viewer applications.</p> <p>To control if the pdes file type is to be associated with the eCADSTAR PCB Viewer then the property should be defined as ASSOCIATEFILETYPES_PCB=-viewerMode</p> <p>This property is not valid if the property ASSOCIATEFILETYPES="" has been defined in the command line string.</p>
Default	eCADSTAR PCB Editor
Example	eCADSTAR_2021.1.0.118_setup.exe /i /v"ASSOCIATEFILETYPES_PCB=-viewerMode"

Property	AUTOCHECKUPDATES
Description	<p>Defines the initial setting for performing an automatic check for eCADSTAR product updates during launch of the eCADSTAR applications.</p> <p>To control if this setting is disabled after installation then the property should be defined as AUTOCHECKUPDATES=""</p>
Default	ON
Example	eCADSTAR_2021.1.0.118_setup.exe /i /v"AUTOCHECKUPDATES=""

Property	TARGETDIR
Description	Defines the extraction target directory when performing an eCADSTAR Administrative Installation .
Default	C:\
Example	eCADSTAR_2021.1.0.118_setup.exe /a /v"TARGETDIR=C:\eCS2021"

Performing a Silent Setup of eCADSTAR

The **eCADSTAR** applications can be setup silently onto a PC. This process can setup the applications without displaying any user interface while it occurs.

As there is no user interface displayed the **User Account Control** question is also not displayed to the user. Therefore, the silent setup will fail to complete unless the **Command Prompt** window is launched with **Administrator** privileges. To ensure the **Command Prompt** is running with the required privileges then it should be launched by selecting the **Run as administrator** option available on the **Start menu** or from the **Context menu** when using the **Right Mouse Button** (RMB) over the **Command Prompt App** icon.

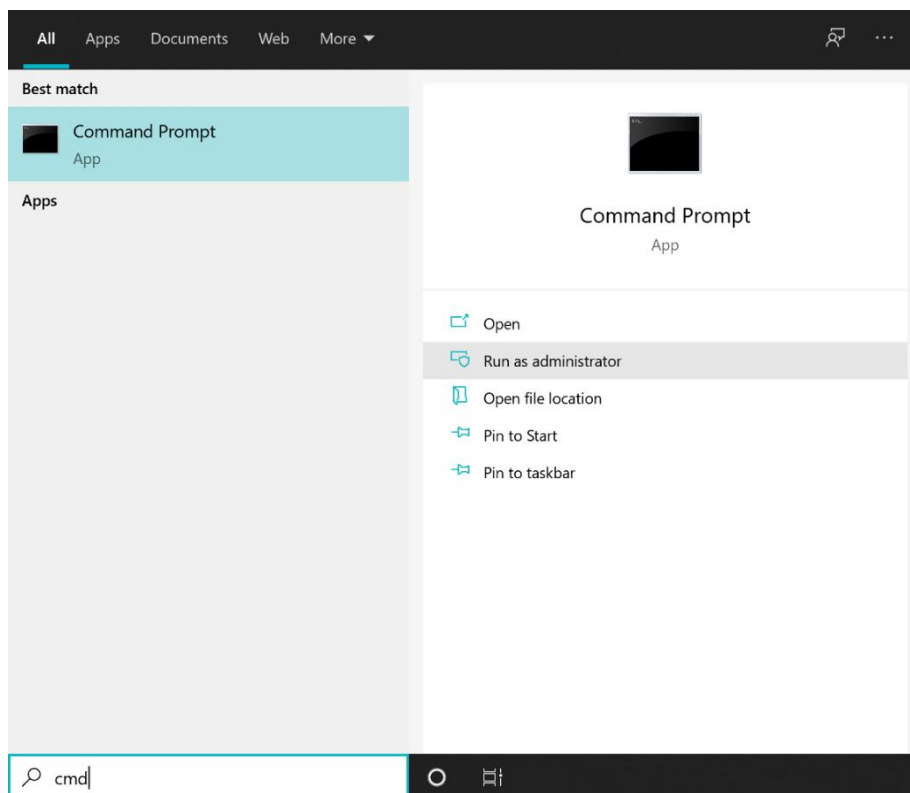


Figure 4: Command Prompt in Windows search results

When this is launched, the user is requested to confirm **User Access Control** for the **Command Prompt** to make changes to the device.

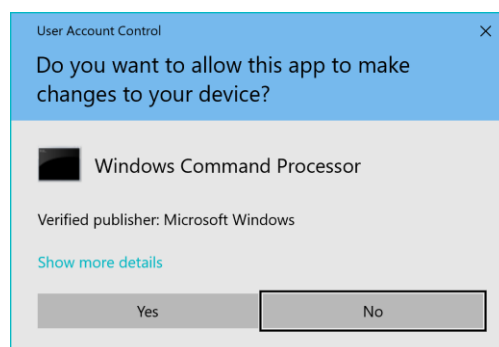


Figure 5: User Access Control question

When confirmed the Command Prompt window is titled **Administrator: Command Prompt** indicating the level of privileges. When using this dialog for the silent setup there is now no requirement to confirm the **User Account Control** question for setup of the software.

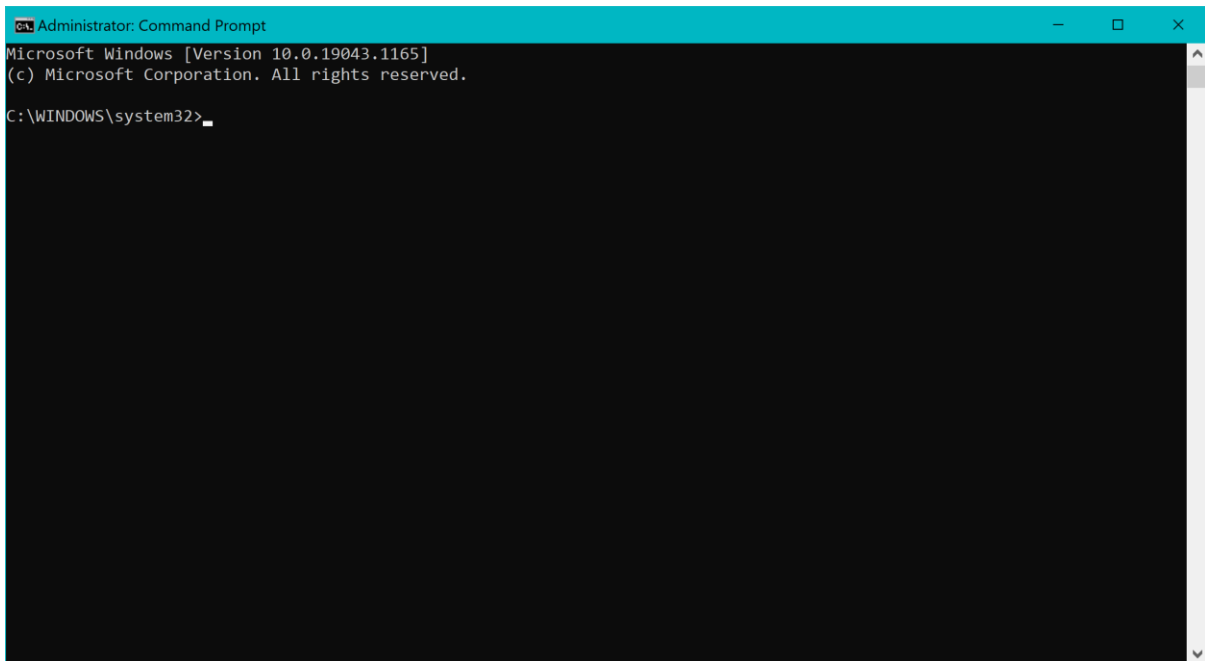


Figure 6: Command Prompt with Administrative privileges

Command Line Options to Silently Install eCADSTAR

For a complete silent installation the command line string will require both the **<setup exe option>** for silent setup **/s** and the **/v"<msiexec option>"** for silent setup **/qn** to be included.

Example command line string:

```
eCADSTAR_2021.1.0.118_setup.exe /s /v"/qn"
```

If the setup process requires a reboot, some of the silent setup options will do so without warning. Please see the Microsoft documentation for further details.

Command Line Options to Silently Uninstall eCADSTAR

For a complete silent uninstallation the command line string will require the **<setup exe option>** to uninstall **/x** and both the **<setup exe option>** for silent setup **/s** and the **/v"<msiexec option>"** for silent setup **/qn** to be included.

Example command line string:

```
eCADSTAR_2021.1.0.118_setup.exe /x /s /v"/qn"
```

If the setup process requires a reboot, some of the silent setup options will do so without warning. Please see the Microsoft documentation for further details.

Command Line Options to set eCADSTAR Network License Server

To setup **eCADSTAR** with the required licensing information during the setup process the following **<msiexec options>** should be included in the command line string.

- **LICENSETYPE**
- **HOSTNAME**
- **HOSTPORT**

Example command line string:

```
eCADSTAR_2021.1.0.118_setup.exe /v"LICENSETYPE=LICENSE_TYPE_NETANDNODE  
HOSTNAME=LicenseServer HOSTPORT=18500"
```

Command Line Options when Using the CADSTAR Viewer Installer

When using the **eCADSTAR Viewer** installation executable the following command line properties can be defined for reference during the setup process.

Property	INSTALLDIR
Description	Defines the installation directory for the eCADSTAR Viewer application files to be located.
Default	C:\Program Files\eCADSTAR\eCADSTAR Design Viewer 2021.1\
Example	eCADSTAR_Viewer_2021.1.0.118_setup.exe /i /v"INSTALLDIR=D:\eCSViewer_2021"

Property	ASSOCIATEFILETYPES_SCHEMATIC
Description	Defines if the sdes file type is to be associated with the eCADSTAR Schematic Viewer applications. To control if the sdes file type is not to be associated with the eCADSTAR Schematic Viewer then the property should be defined as ASSOCIATEFILETYPES_SCHEMATIC=""
Default	ON
Example	eCADSTAR_Viewer_2021.1.0.118_setup.exe /i /v"ASSOCIATEFILETYPES_SCHEMATIC=""

Property	ASSOCIATEFILETYPES_PCB
Description	Defines if the pdes file type is to be associated with or the eCADSTAR PCB Viewer applications. To control if the pdes file type is not to be associated with the eCADSTAR PCB Viewer then the property should be defined as ASSOCIATEFILETYPES_PCB=""
Default	ON
Example	eCADSTAR_Viewer_2021.1.0.118_setup.exe /i /v"ASSOCIATEFILETYPES_PCB=""

Command Line Options when Using the eCADSTAR Network License Server Installer

When using the **eCADSTAR Network License Server** installation executable the following command line properties can be defined for reference during the setup process.

Property	INSTALLDIR
Description	Defines the installation directory for the eCADSTAR Network License Server application files to be located.
Default	C:\Program Files (x86)\eCADSTAR\eCADSTAR Network License Server 2021.0\
Example	Network_License_Server_2021.0.exe /i /v"INSTALLDIR=D:\eCS_License_Server_2021"

Performing an Administrative Installation

The **eCADSTAR** setup executables can be used to perform an **Administrative Installation**. This is performed by using the following command line string:

eCADSTAR_2021.1.0.118_setup.exe /a

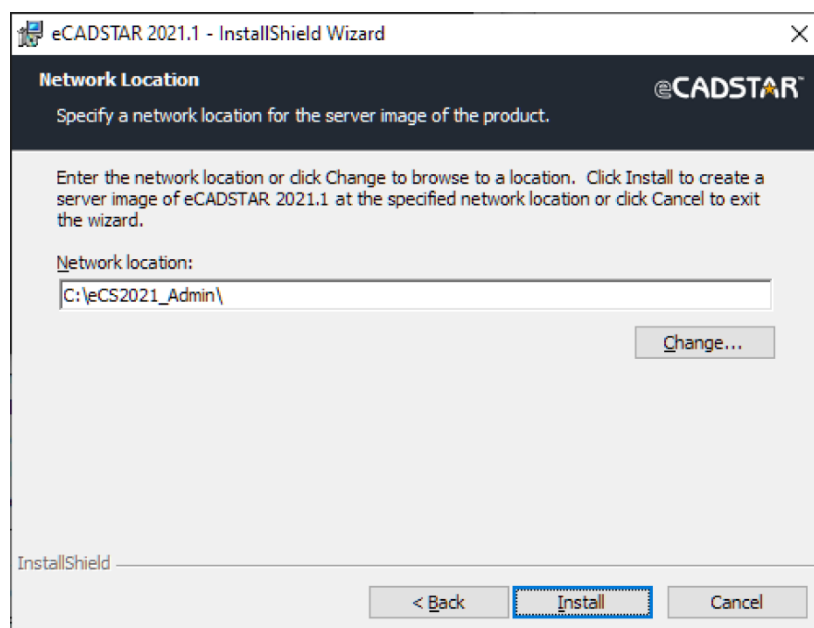
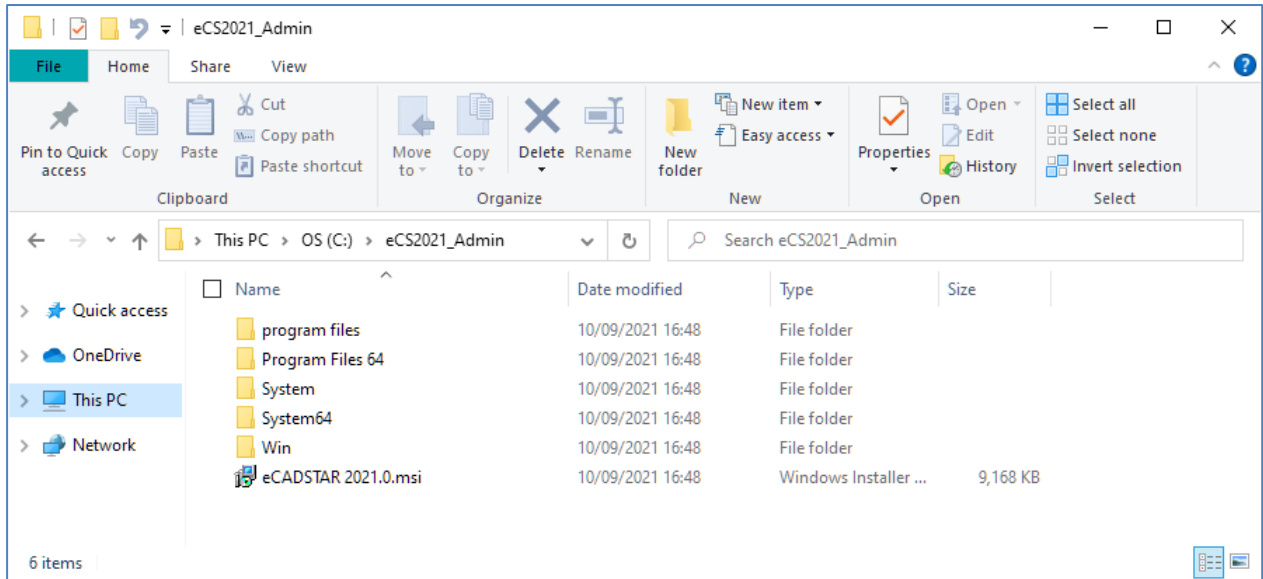


Figure 7: Administrative Installation extraction

This launches the **eCADSTAR** setup to allow the user to choose a location, typically a centralized network drive, to extract the application files to. These files can then be referenced to perform client machine setup of **eCADSTAR**. The target directory for these files can also be defined in the command string:

eCADSTAR_2021.1.0.118_setup.exe /a /s /v"TARGETDIR=T:\eCS_Admin"

NOTE: The default location for the extraction of the **Administrative Installation** is to **C:**, take care when using the silent install option and ensure to define the **TARGETDIR**".



eCADSTAR Setup from the Administrative Installation Files

The following command line options can be used with the **msiexec** (Windows Installer) executable to perform setup options of **eCADSTAR** when referencing the files extracted from the **Administrative Installation**. The command line format should be entered as follows:

<msiexec exe> <msi setup option> <msi source> <msiexec options>

The msiexec Setup Options

Further details on the msiexec command line options can be found [here](#) on the Microsoft website.

Option	/i
Description	Launches the eCADSTAR setup to perform an install of the eCADSTAR software from the extracted files.
Example	msiexec /i "eCADSTAR 2021.1.msi"

Option	/x
Description	Launches the eCADSTAR setup to perform an uninstall of the eCADSTAR software.
Example	msiexec /x "eCADSTAR 2021.1.msi"

Option	/f
Description	Launches the eCADSTAR setup to perform a repair of the eCADSTAR software from the extracted files.
Example	msiexec /f "eCADSTAR 2021.1.msi"

The msiexec Options

For full descriptions of the options refer to the earlier section [The msiexec Options](#)

Option	/qn
Command Operation	No User Interface
Example	msiexec /f "eCADSTAR 2021.1.msi" /qn

Option	/qn+
Command Operation	No User Interface with completion message
Example	msiexec /f "eCADSTAR 2021.1.msi" /qn+

Option	/qb
Command Operation	Basic User Interface
Example	msiexec /f "eCADSTAR 2021.1.msi" /qb

Option	/qb+
Command Operation	Basic User Interface with completion message
Example	msiexec /f "eCADSTAR 2021.1.msi" /qb+

Option	/qb!
Command Operation	Basic User Interface, no Cancel button
Example	eCADS msiexec /f "eCADSTAR 2021.1.msi" /qb!

Option	/qr
Command Operation	Reduced User Interface
Example	msiexec /f "eCADSTAR 2021.1.msi" /qr

The msiexec Properties

- The **Property names** are case sensitive, so cannot be replaced with lower case characters.
 - Example: **INSTALLLDIR** not **InstallDir**
- Where the **Property values** contain space characters these values must be enclosed by double quotation " characters.
 - Example: **INSTALLDIR="C:\eCADSTAR 2021.1"**

For full descriptions of the properties refer to the earlier section [The Properties of the msiexec Options](#)

Property	INSTALLDIR
Example	msiexec /i "eCADSTAR 2021.1.msi" INSTALLDIR=D:\eCS2021

Property	USERDIR
Example	msiexec /i "eCADSTAR 2021.1.msi" USERDIR=D:\eCS2021_userfiles

Property	LICENSETYPE
Example	msiexec /i "eCADSTAR 2021.1.msi" LICENSETYPE=LICENSE_TYPE_NETANDNODE

Property	HOSTNAME
Example	msiexec /i "eCADSTAR 2021.1.msi" LICENSETYPE=LICENSE_TYPE_NETANDNODE HOSTNAME=eCSlicserver

Property	HOSTPORT
Example	msiexec /i "eCADSTAR 2021.1.msi" LICENSETYPE=LICENSE_TYPE_NETANDNODE HOSTPORT=12380

Property	ALLUSERS
Example	Msiexec /i "eCADSTAR 2021.1.msi" ALLUSERS="" /qn+

Property	ASSOCIATEFILETYPES
Example	msiexec /i "eCADSTAR 2021.1.msi" ASSOCIATEFILETYPES=""

Property	ASSOCIATEFILETYPES_SCHEMATIC
Example	msiexec /i "eCADSTAR 2021.1.msi" ASSOCIATEFILETYPES_SCHEMATIC=- viewerMode

Property	ASSOCIATEFILETYPES_PCB
Example	msiexec /i "eCADSTAR 2021.1.msi" ASSOCIATEFILETYPES_PCB=-viewerMode

Property	AUTOCHECKUPDATES
Example	msiexec /i "eCADSTAR 2021.1.msi" AUTOCHECKUPDATES=""

END OF DOCUMENT