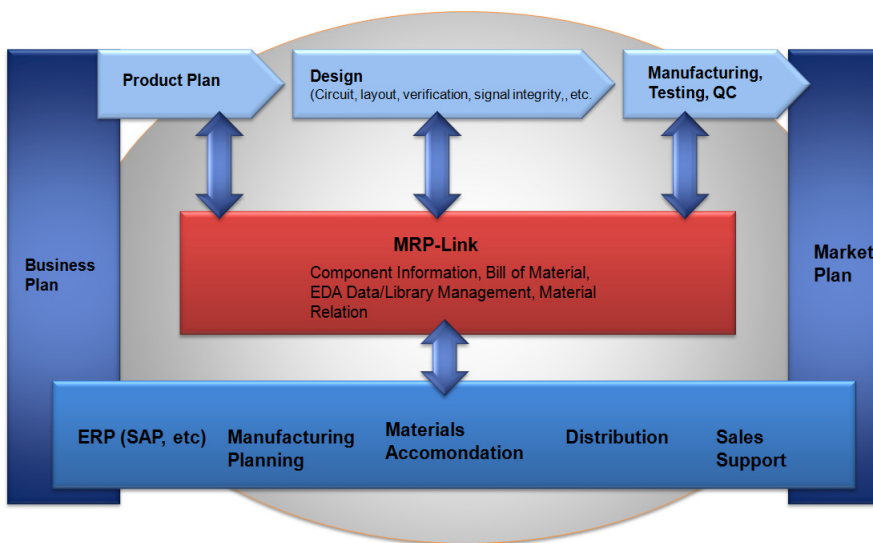




The innovative BOM manager

MRP-Link, the component list and BOM management system, comprises several powerful CAD **manufacturer-neutral modules**. An SQL database is used as the central element that ensures maximum flexibility for optimised and rapid integration into ERP/PLM systems.



The **basic functions** include:

BOM management helps to identify **part uses and component changes** and therefore makes pre-planning the execution of redesigns or design changes easier. The **automatic addition** of alternative or preferred components is also supported, in order to minimise component redundancies. It also helps project managers to easily calculate component costs in order to ensure **adherence** to the **project budget** at all times.

The **component selection** enables you to **quickly find components** using technical features. These can then be inserted directly into the design thanks to "drag and drop". As a result, an impressive selection of components is available via attributes such as releases, usability and alternative components.

Data replication safeguards **consistency** when copying and distributing data and database objects from one database to another and during the subsequent synchronisation process. The **synchronisation function** with ERP or PLM systems offers **the precise exchange of information** and prevents duplicated or redundant information, thereby reducing the risk of data input errors.

Highlights of the MRP-Link

The MRP-Link **reduces development and administration costs**:

- Automatic bi-directional synchronisation minimises errors when creating designs
- The availability of alternative and preferred components safeguards the use of the best components from both a technical and commercial point of view
- The ongoing creation of BOMs facilitates realistic costing with scenario analyses

The MRP-Link **reduces development time**:

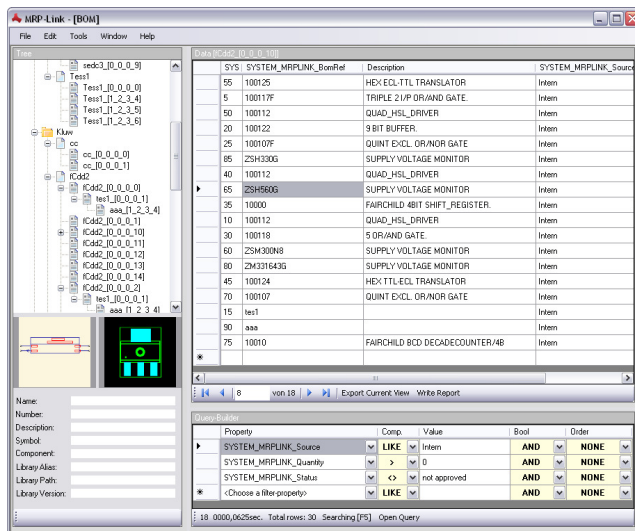
- The integration of non-electrical components during BOM creation facilitates parallel planning for all components
- The use of standardised file formats ensures compatibility with common systems through import and expert functions
- Rights management simplifies administrative processes and guarantees user-dependent use

A modular structure is one of our MRP-Link's best qualities.

Technical specifications for the MRP-Link

In view of its **modular expansion options**, the MRP-Link is flexible and versatile in use. Its **central element** is the **Parts Stock** with its universally-configurable CSV formats for data import and export. Processing rules can be custom-controlled with the "**Constraint Manager**" and the user's **execution rights**. Cross-site **data replication** safeguards data consistency. The Parts Stock can be expanded on a customised basis with further modules.

As an **independent BOM management system**, the MRP-Link also comprises the **BOM and Report BOM management modules** for **creating, editing or supplementing article data**, such as the status during ongoing operation. This makes the data automatically accessible for all users. The module also features extensive version management and inheritance options. BOMs can be introduced as new articles and thus form the basis for hierarchical structures and freely-configurable differentiated BOMs.



With the expansion of the **alternative database**, BOMs can be automatically supplemented with **alternative components** and preferred components are identified.

The **BOM Extractor** can create freely-configurable **BOMs or checklists** from a project at any time in the design cycle with just a few clicks of the mouse. These can then be processed further in other applications such as spreadsheet programs.

The **Library Searcher** is an easy-to-use **search engine** that takes over the sometimes difficult and time-consuming task of searching for and finding the best available components in CADSTAR and performs this task in a targeted manner.

The **Library Replication module** ultimately assists with the **synchronisation** of CADSTAR libraries across different locations.

MRP-Link basic modules:

- Parts Stock
- User Administration
- Group Access Rights
- Constraint Manager
- Database Replication

Optional modules:

- BOM Management
- Report BOM Management
- Alternative Database
- BOM Extractor CADSTAR
- BOM Extractor E3.series
- Library Searcher for CADSTAR
- Library Replication for CADSTAR

Technical requirements

- Operating system: Windows Vista, Windows XP SP2, Windows Server 2003 R2 /2008, both as 32 or 64 Bit including Net Framework 3.0
- At least Microsoft SQL Server 2005 Express Edition (free)
- Computer with 1.6 GHz processor
- 1 GB of RAM
- 1 GB of hard disk space
- Screen resolution of 1024x768 or higher